



Low energy return on investment (EROI) need not limit oil sands extraction

Posted by [Rembrandt](#) on June 10, 2013 - 12:27am

This is a guest post by [Adam Brandt, Assistant Professor from Stanford University, Department of Energy Resources Engineering.](#)

1. Introduction

Low energetic returns (e.g., EROI, NER) from oil sands extraction and upgrading have been noted as a potential limit to the development of the oil sands as a substitute for depleting conventional oil resources (e.g., Herweyer and Gupta, 2008). In this article we will examine this claim from a variety of perspectives. Specifically, we will examine the following questions:

- Are the energetic returns from oil sands extraction lower than conventional oil?
- How have the energy returns from oil sands extraction varied over time?
- What energy sources are used in oil sands extraction, and what are the implications of this sourcing for net energy availability from the oil sands?
- Will low energy returns limit the net output of energy from the oil sands industry?

This article is based on the peer-reviewed journal article: [Brandt A.R., J. Englander and S. Bharadwaj \(2013\). The energy efficiency of oil sands extraction: Energy return ratios from 1970 to 2010. *Energy*.](#)

2. Are energy returns from oil sands extraction lower than conventional oil?

Previous works have calculated the energy returns from oil sands production using a variety of methods (Peter 2010; Herweyer and Gupta 2008; Rapier 2008; Peter 2012; DOE 2006). These studies estimate EROI from the oil sands at values ranging from 2.5 GJ/GJ to 7 GJ/GJ. Most of these estimates were generated quite simply, relying on a limited amount of data. Because of the different system boundaries used in each study, as well as other methodological differences, determining the exact reasons for variation in these estimates is challenging.

Our recent work (Brandt et al. 2013) utilized detailed energy production and consumption data reported by oil sands producers from 1970 to 2010 to examine trends in historical energy returns from oil sands extraction. The system diagram and flows considered are shown in Figures 1 and 2. Data are available on a monthly basis for most flows, with limited interpolation required in mining datasets, and some back-extrapolation required for in-situ energy intensities (see Brandt et al. (2013) for methodological details). The resulting energy inputs and outputs from mining and in situ production are shown in Figures 3 and 4. Mine mouth (e.g., extraction only, excluding refining) net energy returns (NER) for the entire industry were found to be 5.23 GJ/GJ in 2010. In situ NERs were approximately 3.5 to 4 GJ/GJ in 2010 while mining NERs were approximately 5.5 to 6 GJ/GJ.

Conventional oil EROI metrics commonly show energy returns of order 10-20 GJ/GJ (Gagnon 2009 et al.; Guilford et al., 2011; Dale et al. 2011). Therefore, oil sands projects exhibit

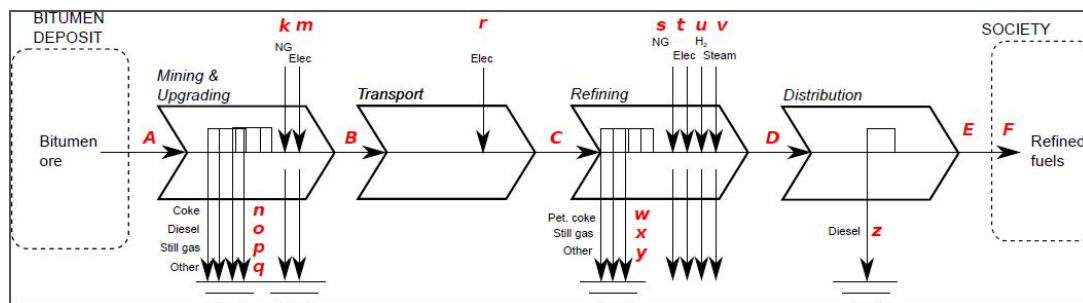


Figure 1. System diagram for mining and upgrading pathways showing primary product flow (capital letters A-F) and consumptive flows (lower-case letters k-z).
Source: Brandt et al. (2013).

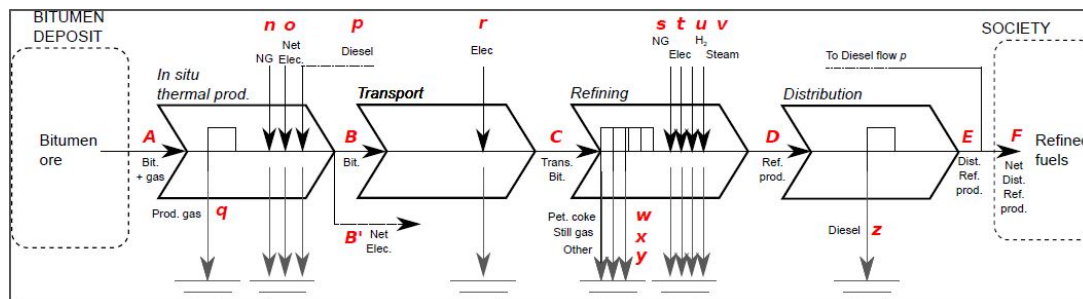


Figure 2. System diagram for mining and upgrading pathways showing primary product flow (capital letters A-F) and consumptive flows (lower-case letters k-z).
Source: Brandt et al. (2013).

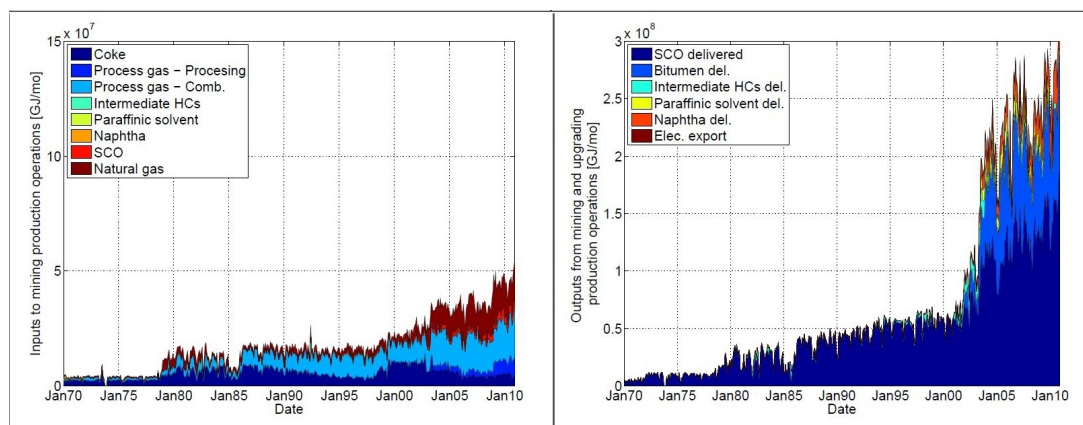


Figure 3. Energy inputs (left) and outputs (right) from oil sands mining operations, measured in GJ/mo. Source: Brandt et al. (2013).

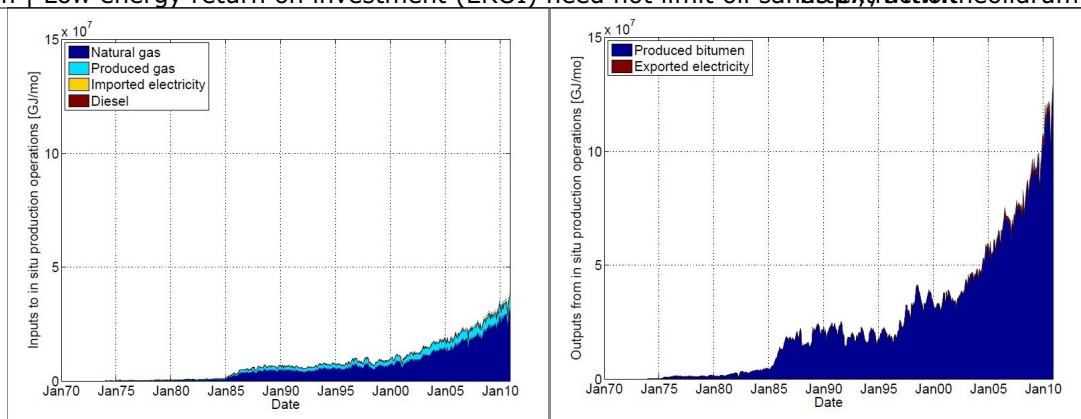


Figure 4. Energy inputs (left) and outputs (right) from oil sands in situ operations, measured in GJ/mo. Source: Brandt et al. (2013).

3. How have energy returns from oil sands extraction changed over time?

Net energy returns from mining and in situ operations (again, measured at a mine-mouth system boundary) have increased steadily over time, growing from 1.0 GJ/GJ in 1970 (entirely from the Suncor mining operation) to 2.95 GJ/GJ in 1990 and then to 5.23 GJ/GJ in 2010. As shown in Figure 5, significant improvements in mining energy returns have been realized.

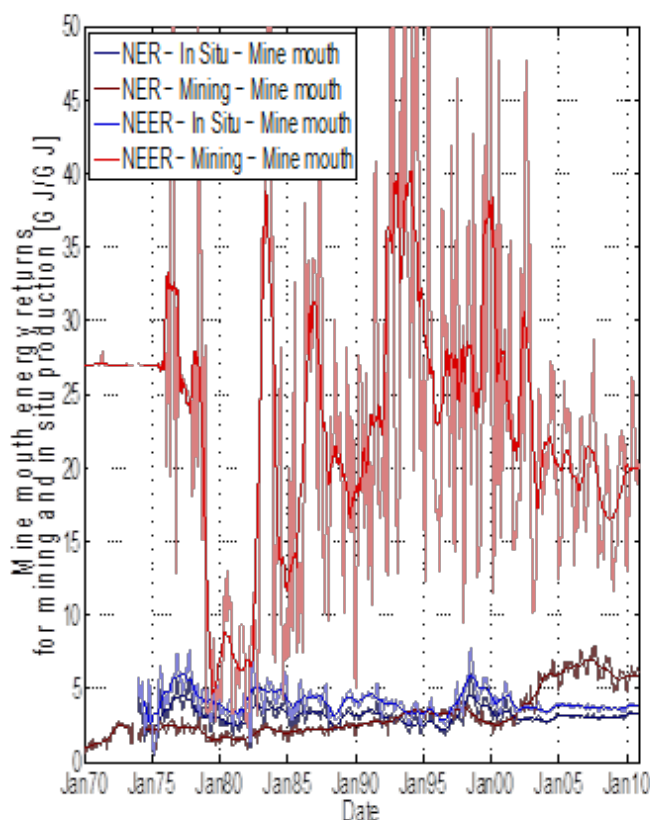


Figure 5. Net energy returns (NER) and net external energy returns (NEER) for mining and in situ operations, measured at the “mine mouth” system boundary. Source: Brandt et al. (2013).

4. What are the implications of oil sands energy sourcing for limitations due to low

energy returns?

The net energy returns reported above are just one metric to assess the energy returns from oil sands operations. Using the key provided in Figure 1 for mining operations (top), a mine-mouth NER compares the net output from the mining and upgrading operation to the *total* energy inputs into the mining and upgrading stage. Symbolically, this can be written as:

$$NER_{mm} = \frac{B}{k+m+n+o+p+q}$$

where $B, k...q$ are defined for the mining pathway shown in Figure 1. However, this might not be the main point of interest from a societal net energy perspective. If one is concerned about the ability of the oil sands to provide net energy to society relative to the energy that they consume from other sectors, then one may actually more concerned with a ratio that we define as the net external energy return (NEER). Symbolically, we can state that:

$$NEER_{mm} = \frac{B}{k+m}$$

That is, if we are concerned about the ability of the oil sands to provide energy to society, what we are concerned about is parasitic consumption of natural gas (flow k) and electricity (flow m) by the operations, relative to how much unrefined energy they provide to society (flow B). Energy consumed on site that is produced as by-products from the production process (e.g., coke or still gas) may not be a concern from the perspective of energetic availability (although may be a major concern from an environmental perspective).

Measured in this way, the NEER from mining operations was approximately 20 GJ/GJ in 2010, significantly higher than the corresponding NER (see Figure 5).

5. Will low energy returns limit the output of net energy from the oil sands?

These data suggest that oil sands processes exist that have reasonably high energetic returns relative to *external* energy provided by other energy sectors. That is, relative to the amount of energy that they consumed from the rest of society (e.g., natural gas, imported diesel, and electricity), these processes produce a significant amount of net energy output. This is partly a result of historical development and geographic considerations: the oil sands mining operations developed in a remote and poorly-integrated part of Alberta, and therefore were designed to be largely energy self-sufficient. Importantly, these conclusions are not just limited to mining operations. In situ operations such as the Nexen Long Lake project produce steam using upgrader by-products (asphaltene residues).

Our results suggest that it is not realistic to expect oil sands extraction to be limited by their calls on natural gas and other resources. If natural gas becomes expensive, processes can be adopted to use byproducts of the processing of bitumen to fuel extraction (e.g., integrated operations). However, these integrated processes have implications for the amount of oil sands resource available (e.g., not all barrels able to be produced will be available as “net” barrels of output) and can have important climate implications (e.g., using coke for fueling bitumen separation or steam production is more GHG intensive than using natural gas).

6. Works cited

Peter CJ. Enbridge northern gateway pipeline project energy return on investment. In the matter of NEB file: OF-Fac-Oil-N304- 2010-01 01 Northern Gateway Pipelines Inc. Application for Enbridge northern gateway project, certificate of public convenience and necessity 2011. <http://www.ceaa-acee.gc.ca/050/documents/54603/54603E.pdf>.

Herweyer M, Gupta A. Unconventional oil: tar sands and shale oil e EROI on the web, part 3 of 6. Technical Report. The Oil Drum, <http://www.theoildrum.com/node/3839>; 2008.

Rapier R. The energy return of tar sands. 2008. <http://robertrapier.wordpress.com/2008/11/14/the-energy-return-of-tar-sa...>

Peter C, Jacob N. Alberta to China: what's the energy return? C.J. Peter Associates Engineering; 2012. <http://www.bcsea.org/sites/default/files/webinars/20120522-Peter-Jacob-G...>

DOE. Fact sheet: energy efficiency of strategic unconventional resources. DOE Office of Petroleum Reserves e Strategic Unconventional Fuels; 2006. http://fossil.energy.gov/programs/reserves/npr/Energy_Efficiency_Fact_Sh...

Brandt A.R., J. Englander and S. Bharadwaj. The energy efficiency of oil sands extraction: Energy return ratios from 1970 to 2010. *Energy*. 2013. DOI: 10.1016/j.energy.2013.03.080

Gagnon N, Hall CA, Brinker L. A Preliminary Investigation of Energy Return on Energy Investment for Global Oil and Gas Production. *Energies* 2009; 2: 490-503.

Guilford MC, Hall CA, O'Connor P, Cleveland CJ. A New Long Term Assessment of Energy Return on Investment (EROI) for U.S. Oil and Gas Discovery and Production. *Sustainability* 2011;3: 1866-87.

Dale M, Krumdieck S. Bodger P. Net energy yield from production of conventional oil *Energy Policy* 2011; 39: 7095-7102.



This work is licensed under a [Creative Commons Attribution-Share Alike 3.0 United States License](http://creativecommons.org/licenses/by-sa/3.0/us/).